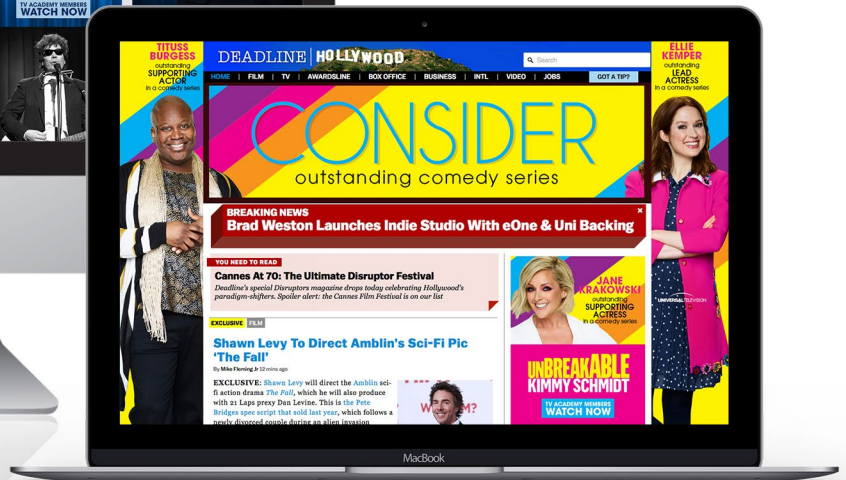




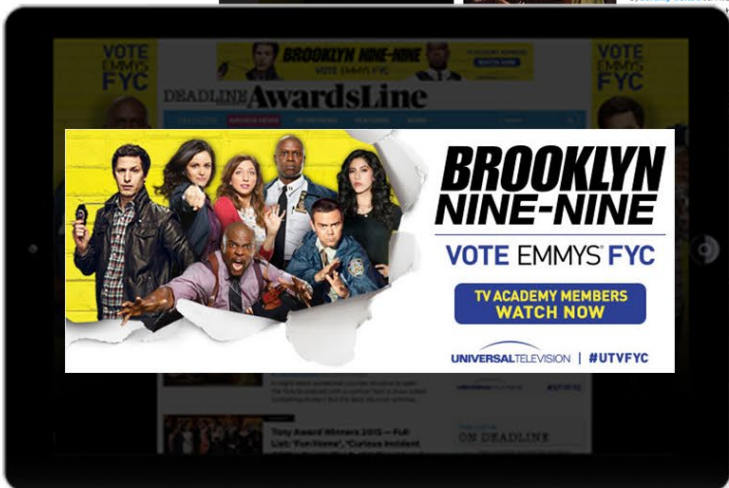
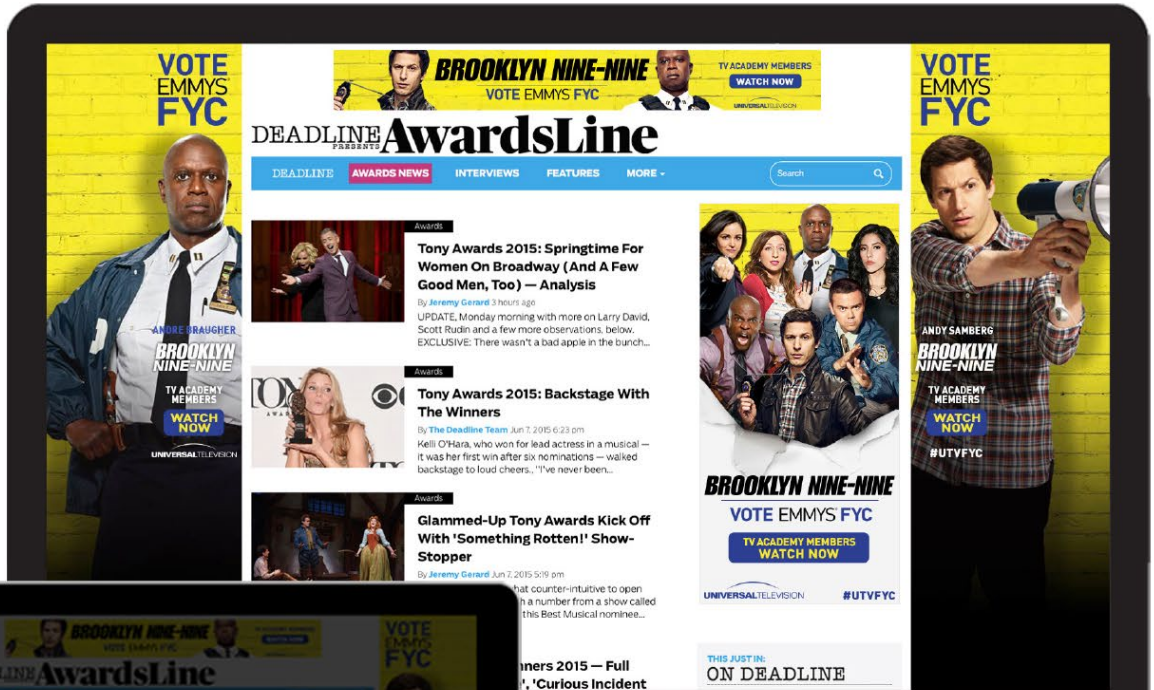
ENTERTAINMENT

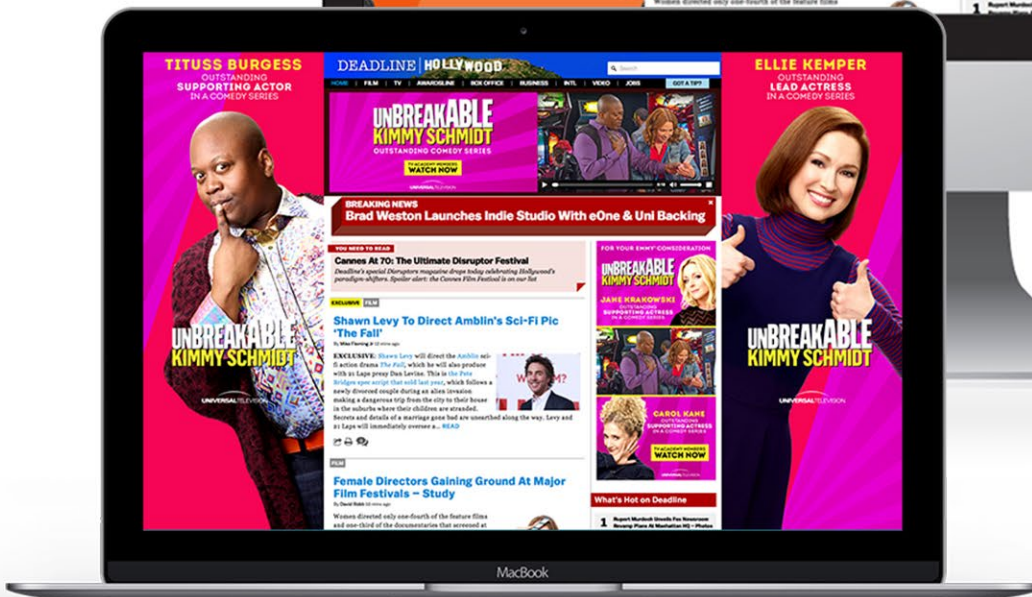
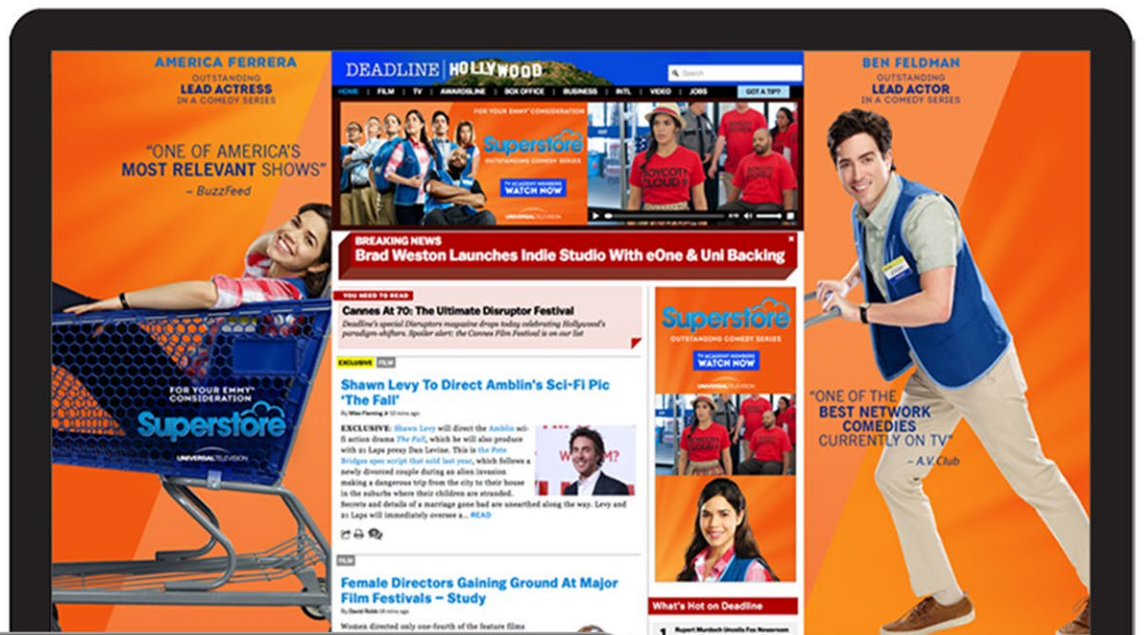
S O N N E N T A G

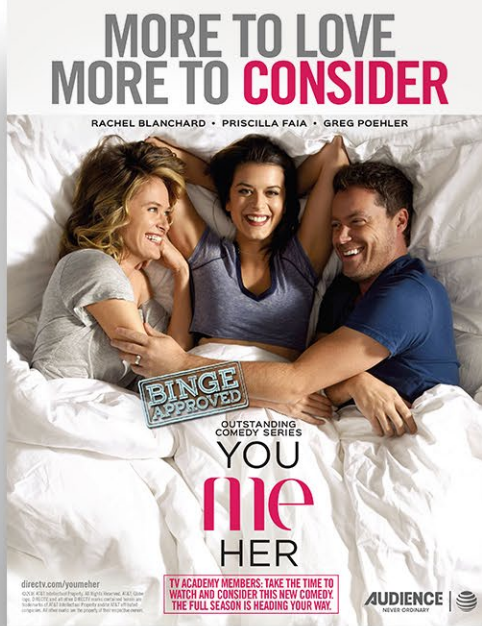
creative advertising and design

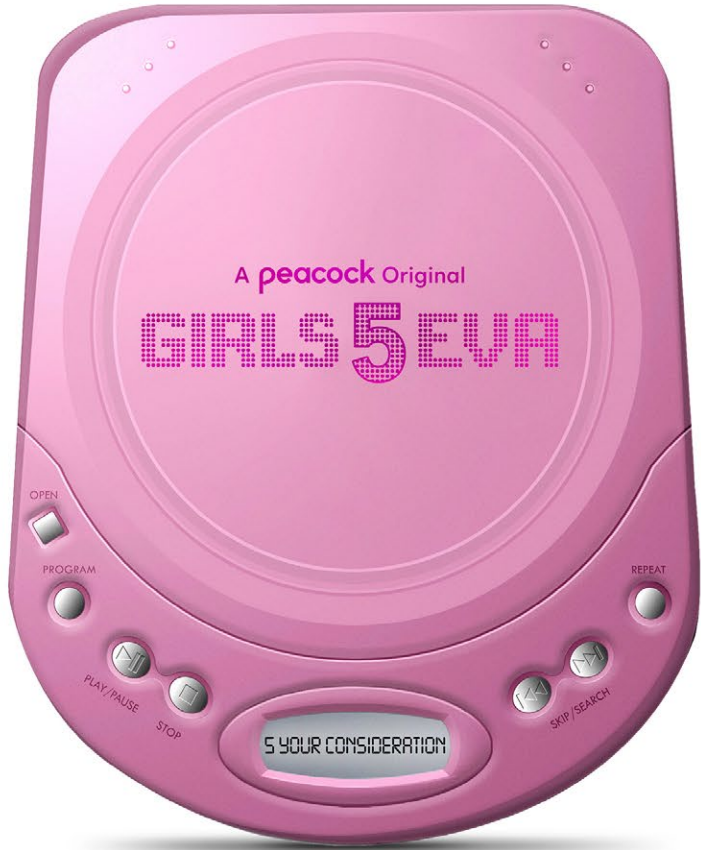














FOR YOUR SAG AWARDS[®] CONSIDERATION

A peacock Original
WE ARE LADY PARTS

WE ARE LADY PARTS shows the highs and lows of the band – Lady Parts – as seen through the eyes of Amina Husain band – Lady Parts – as seen through the eyes of Amina Husain band – a geeky microbiology PhD student, who’s on the lookout for love and is recruited to be their unlikely lead guitarist.

Lady Parts’ fierce and enigmatic frontwoman Saira sees something in Amina. However, the other members – taxi-driving drummer Ayesha, cartoon-drawing bassist and backing vocalist Bisma and the band’s wheeler-dealer band manager Montaz – are not convinced she is right for their band.

Amina has never met girls like this before, and she’s soon swept up in their joyful, anarchic energy and punk spirit. But she becomes torn and caught up between two different worlds – that of her more strait-laced university friends led by her bestie Noor and the world of Lady Parts.

Will she be the key to the band’s success?
And – will she finally find a husband?

Outstanding Performance by
AN ENSEMBLE IN A COMEDY SERIES

Outstanding Performance by
A FEMALE ACTOR IN A COMEDY SERIES

“...THE SERIES IS A MAJOR LEAP FOR TELEVISION”
—LOS ANGELES TIMES

A peacock Original
WE ARE LADY PARTS

EPISODE 1 – PLAY SOMETHING
EPISODE 2 – POTENTIAL FUTURE SPOUSE
EPISODE 3 – EARTH NATIVES
EPISODE 4 – COZZILLA
EPISODE 5 – REPRESENT
EPISODE 6 – SPARTA

TO LISTEN TO THE COMPANION SOUNDTRACK TO THE SERIES, SCAN THIS QR CODE

JULIETTE MOTAMED AS
AYESHA

“EVERY EPISODE IS A FAST-PACED DELIGHT”
—TIME MAGAZINE

FAITH OMOLE AS
BISMA

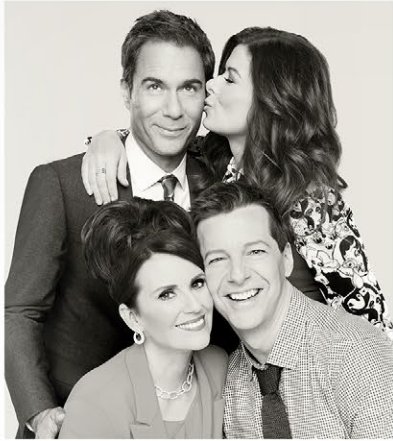
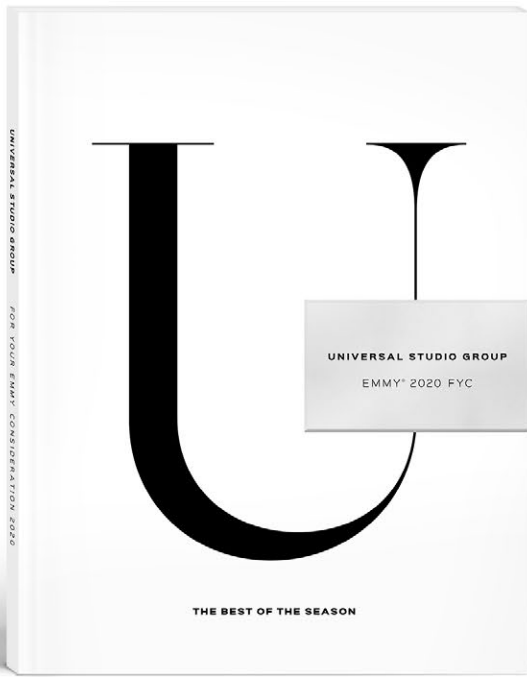
“SMART, IMAGINATIVE, ENERGETIC.”
—TIME MAGAZINE

ANJANA VASANI AS
AMINA

“...FILLED WITH ENERGY AND JUST TONS OF FUN TO WATCH”
—VULTURE

LUCIE SHORTHOUSE AS
MONTAZ

“...HITS ALL THE RIGHT NOTES”
—NEW YORK TIMES “WATERING”



WILL & GRACE outstanding comedy series



THE GOOD PLACE outstanding comedy series



MR. ROBOT outstanding drama series



SUITS outstanding drama series





MEGAN HILTY
as Ivy Lynn

Megan Hilty stars in the upcoming eight-hour TV event, an ensemble performer who has spent years pursuing stardom only to be bumped back into the chorus again and again. But she needs to know whether she has finally earned her place in the spotlight or if she is destined to remain a minor player. A native of Seattle, Hilty moved to New York City after graduating from the prestigious Carnegie Mellon University, and quickly made her Broadway debut as Glinda in *Wicked*. She went on to perform the role in both the national tour and in Los Angeles.

After receiving rave reviews for her portrayal of Dorian Brock in *Broadway 9 to 5: The Musical*, Hilty was honored with nominations for Lead Actress in a Musical at the Drama Desk Awards, Outer Critics Circle Awards, the Drama League Awards and L.A. Stage Alliance Duxton Awards. She starred in *New York, New York* as part of the reprise series in Los Angeles, opposite Jason Hovav, Steven Weber and Faith Prince. Hilty has also performed with the *Cirque du Soleil* and *El Festeiro*'s in New York City.

Hilty's voice has been featured on Disney's *The Secret Life of Pets*, *Phineas & Ferb*, *Glenn Martin DDD* and *American Dad*, as well as singing as Snow White in the film *Snow White and the Seven Dwarfs*. Her voice also will be heard in Disney's upcoming television special *Tinker Bell and the Fairies*. Hilty is currently in production on SumnerStation Entertainment's animated film *Dorothy of Oz* with Kelley Grammer, Hugh Dancy and Lea Michele.

Her television credits include guest-starring roles in *Melissa & Joey*, *Brown, The Closer*, *Dependent Housewives*, *CSI: Crime Investigation*, *Grey's Anatomy*, *The Suite Life of Zack & Cody*, *Hugh Downs* and *Los Melancholy*.

Among Hilty's film credits are *The Billionaire* and the short film, *The Happiest Man Alive*, opposite Justin Chambers.

the NEW TALENT

KATHARINE MCPHEE
as Karen Cartwright

Katharine McPhee stars as the talented but green Karen Cartwright. Newly arrived from Iowa in pursuit of her Broadway dream, Karen must learn to navigate the shark-infested waters of the professional theater to win the role of a lifetime against her competition, stage veterans Ivy Lynn (Megan Hilty), all while maintaining her integrity.

McPhee recently appeared on the big screen in *Relativity Media's Shark Night 3D*. She also co-starred in the Adam Sandler comedy *Happy Delivery*.

Recently on television, McPhee guest starred in episodes of *CSI: NY*, *NBC's Community* and *Family Guy*. She was also featured on two hit PBS specials, *Foster and Friends* and *Chris Rock in Boston*, alongside Sting, Justin Beiber and John Mayer.

McPhee spent 2010 touring the country with her album *(Un)broken*, which included the hit single *Alone*. In 2010, she released her first Christmas album in 2010, covering the holiday classics, featuring an original Christmas song, *It's Not Christmas Without You*, and climbed the charts with the top-line holiday hit *I'll Be Home for Christmas*.

McPhee's self-titled debut album exploded onto the Billboard 200 chart in 2007 and landed at #12. It was also the best chart debut for a female artist in two years. Her first single, *Over the Rainbow*, debuted at #2 on Billboard's Hot Singles Sales chart. The album went gold in 2008, and in 2009, she garnered a Young Hollywood Award for BEST FEMALE VOCALIST.

In addition to her acting and singing career, McPhee is a passionate philanthropist from McPhee/Arnold Group. She also has served as the face of *Sony Hear* and a spokesperson for Neutrogena.

"I remember seeing *Les Misérables* on my first trip to New York. It's such an iconic show and so powerful. It was an incredible night and something I will never forget."

The VETERAN



SMASH

Choreographer
JOSHUA BERGASSE

At the Annette & Company School of Dance in Farmington Hills, Michigan, the 700-plus dance school students are all eagerly awaiting the arrival of NBC's new series *Smash*.

That's where Joshua Bergasse first learned to dance under the watchful eye of his mother, Annette, a former dancer and choreography-trained instructor.

Bergasse, who has been charged with overseeing all choreography for the ambitious new primetime series, has been working towards an opportunity like *Smash* since he first stepped into tap shoes at the age of 3.

"I feel like I'm Charlie and I got the golden ticket," says the 38-year-old Bergasse. "This is my first real venture into TV, so it's been a little bit of a learning process—actually a lot of learning. Fortunately, I come from a musical theater background and became something of a legend in the world of theater on this show. It makes it easier for me because I understand how all that works."

Bergasse got his start teaching tap, jazz and dabbling in choreography while working at his mother's Michigan dance school during his middle and high school years.

BORN TO DANCE

"My mom had performed off-Broadway and her style was very musical theater, which is how and why I got involved in it. *West Side Story*, *Fred Astaire*, *Oyd Charisse*—I was surrounded by all that stuff growing up," he says.

After high school, Bergasse made his way to New York, where he landed his first role in a company tour of *West Side Story*. He went on to dance, sing and act in numerous Broadway, off-Broadway and touring productions, including *A Raisin in the Sun*, *Mousetrap* and *The 25th*.

And as he got more dance experience, Bergasse began trying his hand at choreography.

"As a starting artist, you just want to work. Someone asks you to choreograph something, you do it. It just started to snowball from there. People began trusting me," says Bergasse.

It's since choreographed more than 30 different musical productions including national and international tours of *Fame - The Musical*, *West Side Story*, *Days and Nights* and *South Pacific*. And it's choreography that led him to his current role on *Smash*.

Michael Mayer, who is directing the first three episodes of *Smash*, was in the audience for a charity event Bergasse did at New York University last year. Mayer contacted her shortly after and Bergasse's background and dance experience impressed the *Smash* production team.



HERE'S YOUR CODE

Enjoy full seasons of SHOWTIME® original programming at www.sho.com/foryourconsideration

the big C DEXTER MURKIN
 BORGAS shameless WEEDS
 episodes Californication TARA
 the road to L.A. BULLSHIT

★★★★

FOR YOUR EMMY CONSIDERATION

SHOWTIME®

TV.
AT ITS BEST.

★★★★

High and mighty

LIONSGATE

Outstanding Comedy Series

NURSE JACKIE

EDI FALCO
 EVE BERT
 MERITT VEEVER
 PAUL SCHULTZ
 DOMINIC TOMASEA
 PETER FACINELLI
 ANNA DEAVERE SMITH
 RUBY JENKINS
 MCKENZIE ALAEDRA
 ANJALI GUPTA
 STEPHEN VAUGHAN

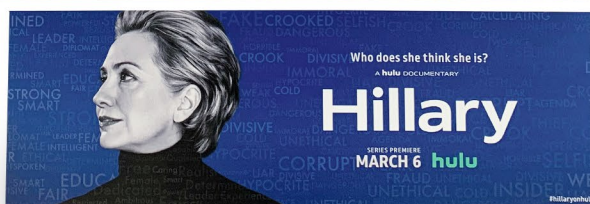
SHOWTIME®

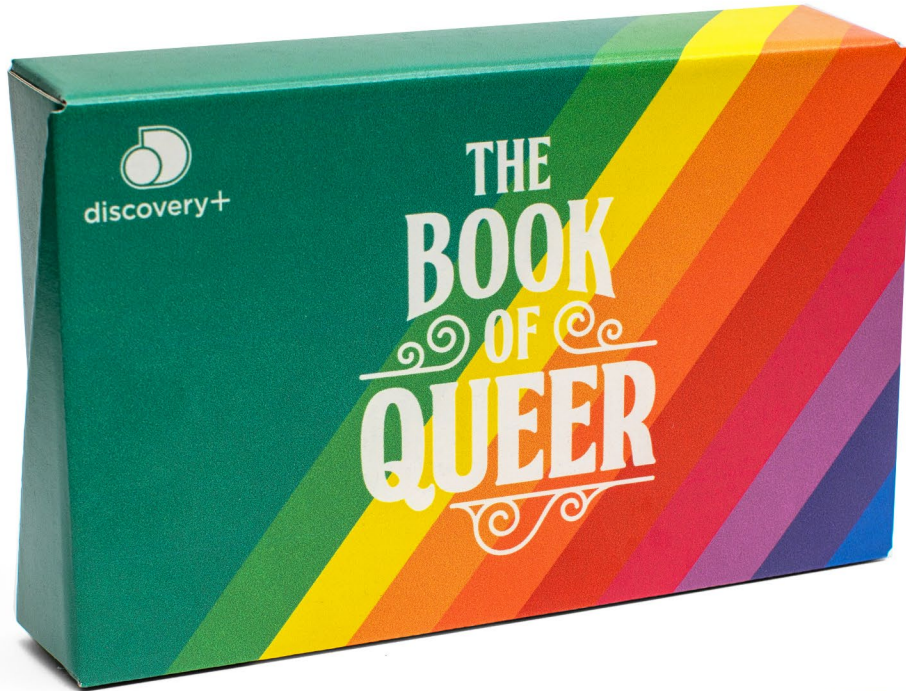
TV.
AT ITS BEST.

★★★★

SHOWTIME







THE BOOK OF QUEER



TEA (noun): a juicy piece of information



MARSHA P. JOHNSON
"PAY IT NO MINT"
While the "P" in her name stands for "Pay It No Mind," this trans activist was a dedicated "drag mother" to homeless youth and participated in the Stonewall Inn uprising.



SAPPHO
"LEMON LESBOS"
This Greek lady of letters enthralled audiences of her day with poems of passion for other women. Hailing from the island of Lesbos, Sappho's work led to the term "lesbian."



ABE LINCOLN
"HONEST ABE-RICOT"
More than four score and seven years ago, a future President shared a male store owner's bed. Although he married a woman, some believe Abe Lincoln never emancipated himself from his queer desires.



MICHELANGELO
"SISTINE CHAPEL CHAI"
This Renaissance artist sculpted, sketched and painted the human form with exquisite detail, perhaps drawing inspiration from the men about whom he wrote deeply romantic poetry.



ELEANOR ROOSEVELT
"ROSE-EVELT"
This First Lady started an affair with reporter Lorena Hickok while on her husband's campaign trail. Their connection was so intense that Lorena even moved into the White House.



KING JAMES
"THE KING'S ENGLISH"
King James made his mark on history with an English translation of the Bible that ironically condemned homosexuality, despite good evidence that he had multiple affairs with men.



SALLY RIDE
"STARRY NIGHTS"
America's first woman in space blazed a trail across the heavens. After her death, she was also acknowledged as the first gay astronaut when her 27-year partnership was revealed.



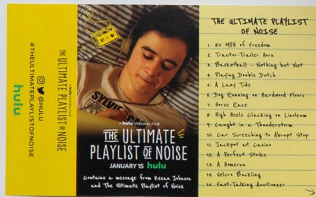
MA RAINEY
"BLUESBERRY"
The "Mother of the Blues" paved the way for generations of artists who followed in her footsteps, all while mentoring and "courting" another talented female singer, Bessie Smith.



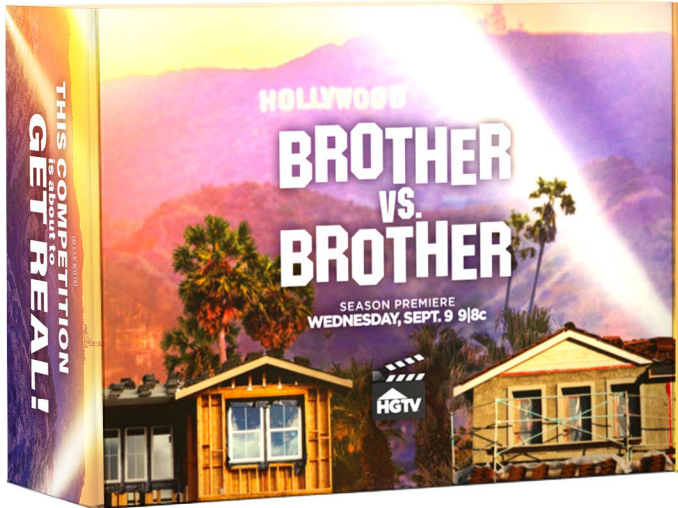


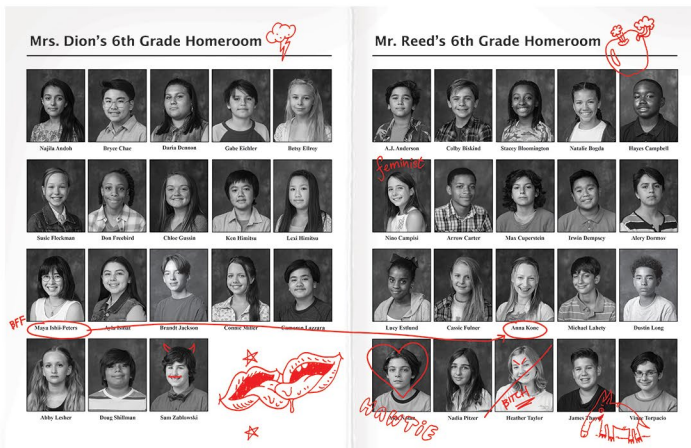
















CHAD

TEAMWORK



CHAD

CHAD

tbs

CHAD
CHAD

FAMILY & FRIENDS

NAZ
played by Saba Homayoon

VOTED MOST SORT-OF-COOL MOM
Naz, Chad's mother, is a loving member of two who is just now venturing into the dating world after her divorce — a situation that her son is finding difficult to accept.



REID
played by Thomas Barbusca

VOTED MOST LIKELY TO BE MY BEST FRIEND
Reid is an overall jerk, but without Chad's presence in his life, he'd be a boring and unexciting person.



DENISE
played by Aboka Loo

VOTED NOT REALLY USEFUL FRIEND
Denise is a quiet, dry wit who never gets into any real drama. Chad is lying — which is classic.



PETER
played by Jake Flynn

VOTED MOST KIND OF EMBARRASSING BEST FRIEND
Peter, Chad's (Reid's) best friend, is a sweet nerd who has nothing to prove. He is confident and is ready to have a great time, unlike Chad.



LIAM
played by Austin Farris

VOTED ALSO MY POPULAR BEST FRIEND
Liam is a popular guy who is always looking for a good time.



CHARLES
played by Gabriel Cruz

VOTED ALWAYS UP IN MY BUSINESS
Charles is the school's resident gossip who is always trying to get into Chad's life.



JOEY
played by Armani Jackson

VOTED WILL SOON BE MY POPULAR BEST FRIEND
Joey is in Chad's class and is part of Reid's group of friends.



IKRIMAH
played by Phing Huijings Jr.

VOTED LITERALLY COOLEST EVER, SERIOUSLY I LOVE YOU, LET'S HANG SINCE YOU'RE BASICALLY MY STEPDAD
Ikrimah is cool, confident, intelligent and dating Chad's mother Naz.



HAMID
played by Paul Chiofalo

VOTED WHY SPECIAL LIVE WITH A GUY
Hamid is a popular guy who is always looking for a good time.



MARJORIE
played by Marianne Arthur

VOTED MOST LIKELY TO TAKE YOUR V-CARD BY FORCE
Marjorie is a popular girl who is always looking for a good time.





the office

SAYING GOODBYE IS INCREDIBLY HARD
(THAT'S WHAT SHE SAID)

